



# GMT MONTHLY MEMBERSHIP PROGRESS REPORT

Results as of: 6/30/2020

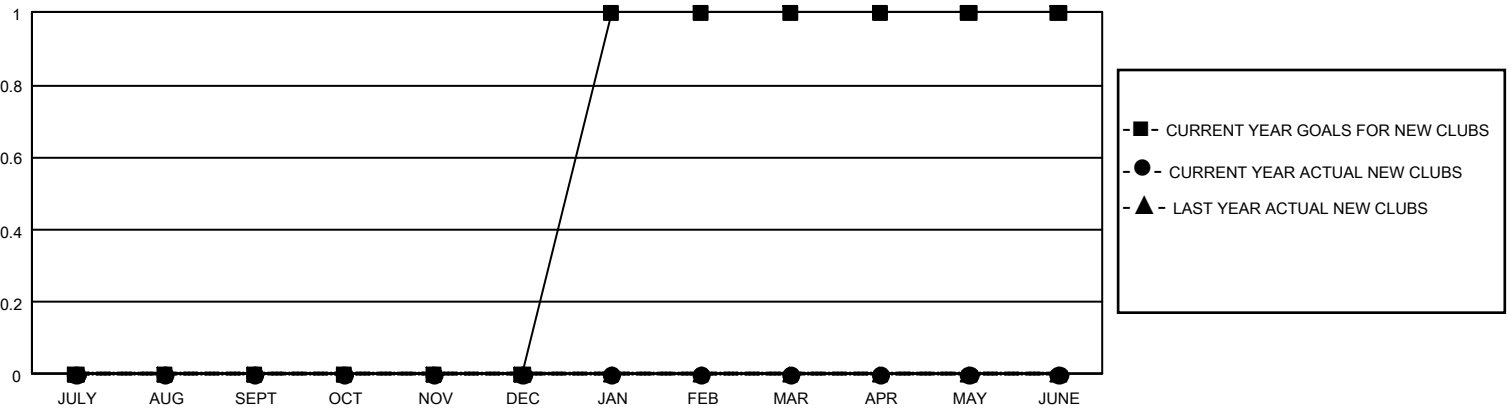
## GMT Constitutional Area 2, Group A

GMT: OPEN

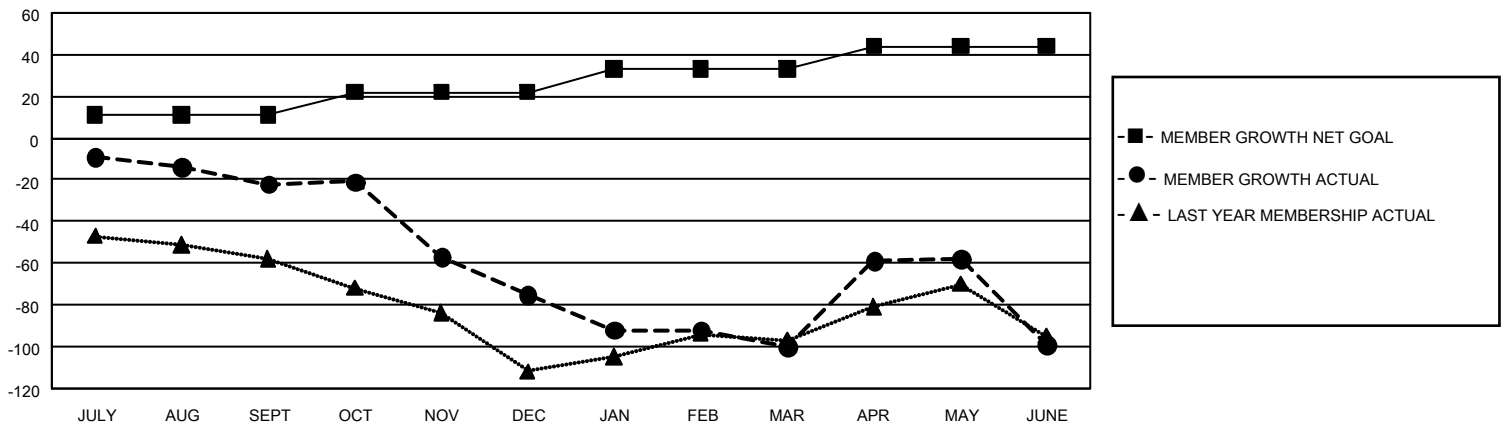
REPORT DOES NOT INCLUDE CLUBS IN UNDISTRICTED AREAS.

Clubs				Members			
RESULTS FOR 2019-2020				RESULTS FOR 2019-2020			
QUARTER	NEW CLUB GOAL	NEW CLUBS	DROPPED CLUBS	QUARTER	MEMBER GROWTH NET GOAL	MEMBER GROWTH ACTUAL	DROPPED MEMBERS ACTUAL (including transfers)
JULY/AUG/SEPT	0	0	0	JULY/AUG/SEPT	33	42	56
OCT/NOV/DEC	0	0	2	OCT/NOV/DEC	33	32	81
JAN/FEB/MAR	3	0	0	JAN/FEB/MAR	33	72	89
APR/MAY/JUNE	0	0	0	APR/MAY/JUNE	33	86	83

GOALS AND ACTUAL NEW CLUBS CUMULATIVE



GOALS AND ACTUAL MEMBERS CUMULATIVE



<b>DROPPED CLUBS: 2</b>	41 CLUBS OF 65 ADDED 1 OR MORE NEW MEMBERS	<u>GENDER DISTRIBUTION</u>	
<u>DROPPED MEMBERS</u>		MALE	1,104 (56.44%)
DECEASED	<a href="#">CLICK HERE FOR CUMULATIVE MEMBERSHIP DATA</a>	FEMALE	852 (43.56%)
CLUB CANCELLED		TOTAL FAMILY UNIT MEMBERS	466
OTHER		FAMILY MEMBERS PAYING HALF DUES	243
<b>TOTAL</b>			